

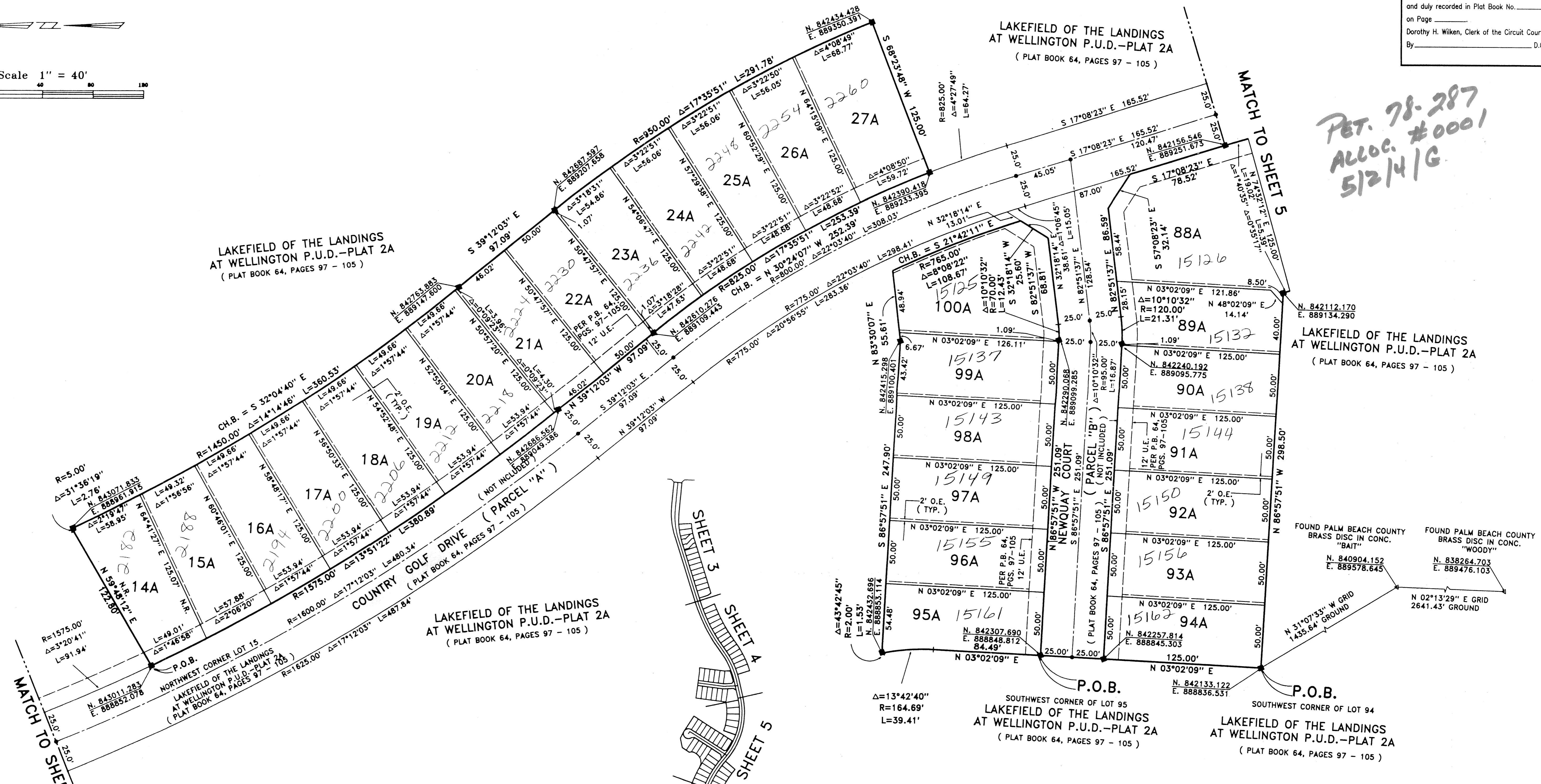
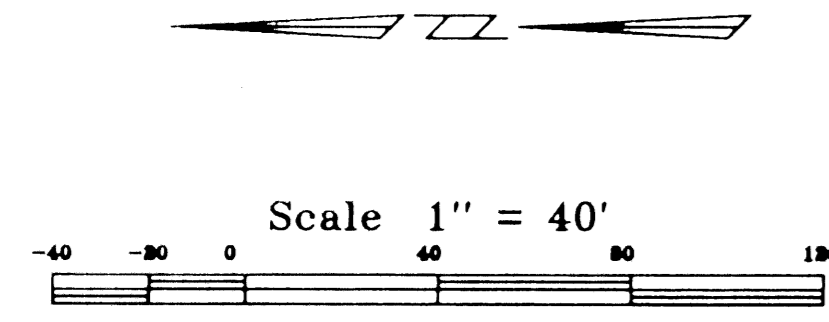
# LAKEFIELD OF THE LANDINGS AT WELLINGTON P.U.D. PLAT 2A REPLAT

134

BEING A REPLAT OF A PORTION OF LAKEFIELD OF THE LANDINGS AT WELLINGTON P.U.D. PLAT 2A, AS RECORDED IN PLAT BOOK 64, PAGES 97 THRU 105, PUBLIC RECORDS OF PALM BEACH COUNTY, FLORIDA AND LYING IN PART OF SECTION 7 AND 18 TOWNSHIP 44 SOUTH, RANGE 41 EAST, VILLAGE OF WELLINGTON, PALM BEACH COUNTY, FLORIDA  
SHEET 4 OF 6 MARCH, 1997



STATE OF FLORIDA  
COUNTY OF PALM BEACH  
This Plat was filed for record at \_\_\_\_\_  
M. This \_\_\_\_\_ day of \_\_\_\_\_, 19\_\_\_\_  
and duly recorded in Plat Book No. \_\_\_\_\_  
on Page \_\_\_\_\_  
Dorothy H. Wilken, Clerk of the Circuit Court  
By \_\_\_\_\_ D.C.



*Pct. 78-287  
Alloc. #0001  
5/2/14/G*

LAKEFIELD OF THE LANDINGS AT WELLINGTON P.U.D. PLAT 2A  
BOOK 80 PAGE 134  
FLOOD MAP # 1112  
GRID # 1112  
SE 70-20-1  
ZIP CODE 33414  
PUD NAME Lakeland of the Landings at Wellington P.U.D.

**COORDINATE NOTE:**  
STATE PLANE COORDINATES SHOWN ARE GRID DATUM, NAD 83 1990 ADJUSTMENT, FLORIDA EAST ZONE, COORDINATE SYSTEM 1983 STATE PLANE TRANSVERSE MERCATOR PROJECTION.  
LINEAR UNIT = US SURVEY FEET  
ALL DISTANCES ARE GROUND  
SCALE FACTOR = 1.0000028  
GROUND DISTANCE X SCALE FACTOR = GRID DISTANCE  
N 86°57'51"W (PLAT BEARING) +00°59'19" CLOCKWISE BEARING ROTATION (PLAT TO GRID)  
N 85°58'32"W (GRID BEARING)

KEY MAP  
NOT TO SCALE

*0269-018*  
~~*027*~~

Landmark Surveying & Mapping Inc.  
1850 FOREST HILL BOULEVARD  
PH. (561)433-5405 SUITE 100 W.P.B. FLORIDA

LAKEFIELD OF THE LANDINGS AT WELLINGTON P.U.D. PLAT 2A REPLAT